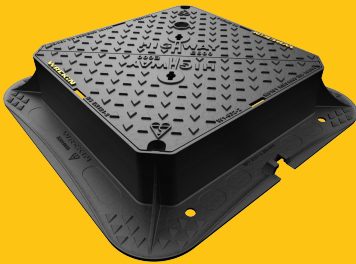


## DMTOE6/6060/KH

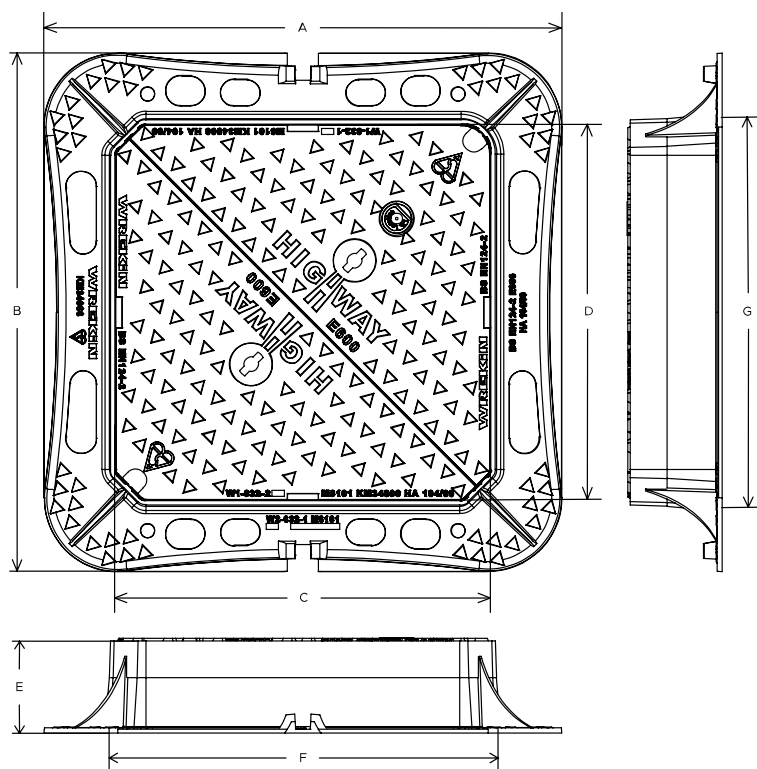
Highway E600 manhole cover 610mm x 610mm clear opening with 150mm frame depth



| RANGE   | CLEAR OPENING (MM) | OVERALL FRAME (MM) | FRAME DEPTH (MM) | OPTIONS   |
|---------|--------------------|--------------------|------------------|---|
| Highway | 610 x 610          | 845 x 845          | 150              | <input type="checkbox"/> Screw locking<br><input type="checkbox"/> Integral badging<br><input type="checkbox"/> Ventilation holes<br><input type="checkbox"/> Flood and odour control plate<br><input type="checkbox"/> Safety grille<br><input type="checkbox"/> Factory-applied badging |

## KEY FEATURES

- ✓ The enlarged frame corners help to dissipate loads onto the foundation, providing a longer service life and increased reliability.
- ✓ Safety keyway prevents accidental disengagement of the lifting key during the handling process.
- ✓ Meets the requirements of CD 534 v0.1.0 (formerly HA 104/09).
- ✓ The high seating position ensures that forces are transmitted more directly downwards, meaning conversion of traffic loads into mortar-compatible compression forces.
- ✓ Keyway lifting points are provided on the frame for safe handling.
- ✓ Surface texturing above and below the flange enables better mortar engagement, reducing any lateral movement which could result in cracking.
- ✓ A retrofittable ID badge can be fitted, also compatible with antennas and communication options (RFID, NFC, IoT)
- ✓ 70+ PSRV tested at top surface of chequer by UKAS accredited 3rd party.
- ✓ Frame gussets are supports which reinforce the corners where the frame sections meet, distributing stress evenly, preventing damage to the frame or the access cover.
- ✓ Indexed corners ensure correct orientation first time, every time.
- ✓ Holes in the frame flange where mortar can pass between the underside and top side, creating an interlock, providing greater strength.
- ✓ Non rocking 3-point suspension design, for silent operation.



## SPECIFICATION

### General information

|                  |                |
|------------------|----------------|
| Stock code       | DMT0E6/6060/KH |
| Primary material | Ductile iron   |
| Range            | Highway        |
| Category         | Manhole cover  |
| Flanges          | 4              |

### Standards, classes and groupings

|           |  |
|-----------|--|
| Standards | BS EN 124-2<br>DMRB<br>MCHW<br>BS7903<br>CD 534 v0.1.0 |
|-----------|--|

|                              |          |
|------------------------------|----------|
| <b>BS EN 124 Class</b>       | E600     |
| <b>BS EN 124 Group</b>       | 4        |
| <b>Third party certified</b> | Kitemark |

## Dimensions

|                              |                 |
|------------------------------|-----------------|
| <b>Frame shape</b>           | Square          |
| <b>Manhole shape</b>         | Square          |
| <b>Overall frame (A x B)</b> | 845 mm x 845 mm |
| <b>Clear opening (C x D)</b> | 610 mm x 610 mm |
| <b>Frame depth (E)</b>       | 150mm           |
| <b>Base opening (F x G)</b>  | 635 mm x 635 mm |

## AVAILABLE OPTIONS

- ✓ **Screw locking**  
Screw locking deters unauthorised access to the chamber. An extended shank socket set is required to engage the locking screw.
- ✓ **Ventilation holes**  
Provide additional cover ventilation in addition to the product's natural ventilation, up to the BS EN 124 allowance.
- ✓ **Safety grille**  
Safety grilles prevent accidental chamber falls.  
Available in a variety of configurations; including bars and mesh as drop-in or hinged.
- ✓ **Industry standard badging**  
Integral industry-standard badging e.g. SW (Storm Water) and FW (Foul Water). Details are taken at point of order.
- ✓ **Flood and odour control plate**  
The flood and odour control plate is manufactured from steel and provides resistance to flood-water ingress and the chamber-odour egress.
- ✓ **ID badging and communications options**  
Bespoke badging and communications antennae, including NFC, RFID and IoT technology.

## ACCESSORIES

| STOCK CODE        | DESCRIPTION  |
|-------------------|--|
| PC/UNIFORM/151076 | Uniform chamber adjustment unit 760mm x 100mm x 15mm |

| STOCK CODE         | DESCRIPTION  |
|--------------------|--|
| PC/UNIFORM/251076  | Uniform chamber adjustment unit 760mm x 100mm x 25mm             |
| PC/UNIWEDGE/755012 | Uniform support wedge 120mm x 50mm x 75mm                        |
| YPCR/U12.5         | 12.5Kg Unipak® rapid curing polyester resin mortar               |
| YPCR/U25           | 25Kg Unipak® rapid curing polyester resin mortar                 |
| GRITBLOCKER        | Anti-blockage keyway insert                                      |
| SCREWLIFT          | Manhole cover levelling system                                   |
| KEY/LONG           | Large cover lifting keys with a long handle (sold as a pair)     |
| KEYSHEAVY          | Large cover lifting keys with a standard handle (sold as a pair) |

## NOTES

All values stated are nominal within 2.5% tolerance.

1. Wrekin Products Ltd is continually seeking to improve our products and therefore reserves the right to alter product specifications without prior notice.
2. It is the responsibility of all users to satisfy themselves the above data is current.
3. Installation details are available on request.
4. All Wrekin products are supplied subject to our [Terms and Conditions of Sale](#)

