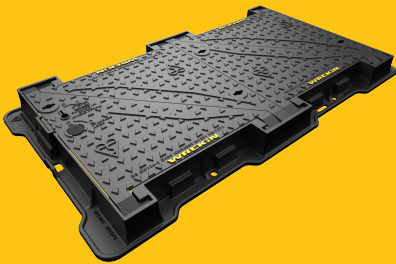


DMHOD4/1361/K

Vault D400 manhole cover 1300mm x 610mm clear opening with 100mm frame depth



RANGE	CLEAR OPENING (MM)	OVERALL FRAME (MM)	FRAME DEPTH (MM)	OPTIONS
Vault	1,300 x 610	1,490 x 810	100	<input type="checkbox"/> Ventilation holes <input type="checkbox"/> Flood and odour control plate <input type="checkbox"/> Safety grille

KEY FEATURES

- ✓ The enlarged frame corners help to dissipate loads onto the foundation, providing a longer service life and increased reliability.
- ✓ Features an LPCB Level 3 lock, offering an unrivalled level of high security.
- ✓ Safety-stop hinges prevent covers from falling once opened.
- ✓ Mechanical lifting points are provided.
- ✓ Secured with a turnbuckle lock.
- ✓ Indexed corners ensure correct orientation first time, every time.
- ✓ Safety keyway prevents accidental disengagement of the lifting key during the handling process.
- ✓ Covers open sequentially, with standard BS7903 lifting keys.
- ✓ 70+ PSRV tested at top surface of chequer by UKAS accredited 3rd party.

SPECIFICATION

General information

Stock code	DMHOD4/1361/K
Primary material	Ductile iron
Range	Vault

Category	Manhole cover
Flanges	4

Standards, classes and groupings

Standards	BS EN 124-2 BRE PN111 DMRB MCHW
BS EN 124 Class	D400
BS EN 124 Group	4
Third party certified	BRE LPCB Kitemark

Dimensions

Frame shape	Rectangular
Manhole shape	Rectangular
Overall frame (A x B)	1,490 mm x 810 mm
Clear opening (C x D)	1,300 mm x 610 mm
Frame depth (E)	100mm
Base opening (F x G)	1,325 mm x 635 mm

AVAILABLE OPTIONS

✓ Ventilation holes

Provide additional cover ventilation in addition to the product's natural ventilation, up to the BS EN 124 allowance.

✓ Safety grille

Safety grilles prevent accidental chamber falls.
Available in a variety of configurations; including bars and mesh as drop-in or hinged.

✓ Flood and odour control plate

The flood and odour control plate is manufactured from steel and provides resistance to flood-water ingress and the chamber-odour egress.

ACCESSORIES

STOCK CODE	DESCRIPTION
PC/UNIFORM/151076	Uniform chamber adjustment unit 760mm x 100mm x 15mm
PC/UNIFORM/251076	Uniform chamber adjustment unit 760mm x 100mm x 25mm
PC/UNIWEDGE/755012	Uniform support wedge 120mm x 50mm x 75mm
YPCR/U12.5	12.5Kg Unipak® rapid curing polyester resin mortar
YPCR/U25	25Kg Unipak® rapid curing polyester resin mortar
KEY/MC	Lifting key for turnbuckle lock on our Vault range of covers
KEYS/L	Small cover combined lifting key
KEY/LONG	Large cover lifting keys with a long handle (sold as a pair)
KEYSHEAVY	Large cover lifting keys with a standard handle (sold as a pair)
GRITBLOCKER	Anti-blockage keyway insert
SCREWLIFT	Manhole cover levelling system

NOTES

All values stated are nominal within 2.5% tolerance.

1. Wrekin Products Ltd is continually seeking to improve our products and therefore reserves the right to alter product specifications without prior notice.
2. It is the responsibility of all users to satisfy themselves the above data is current.
3. Installation details are available on request.
4. All Wrekin products are supplied subject to our [Terms and Conditions of Sale](#)

